

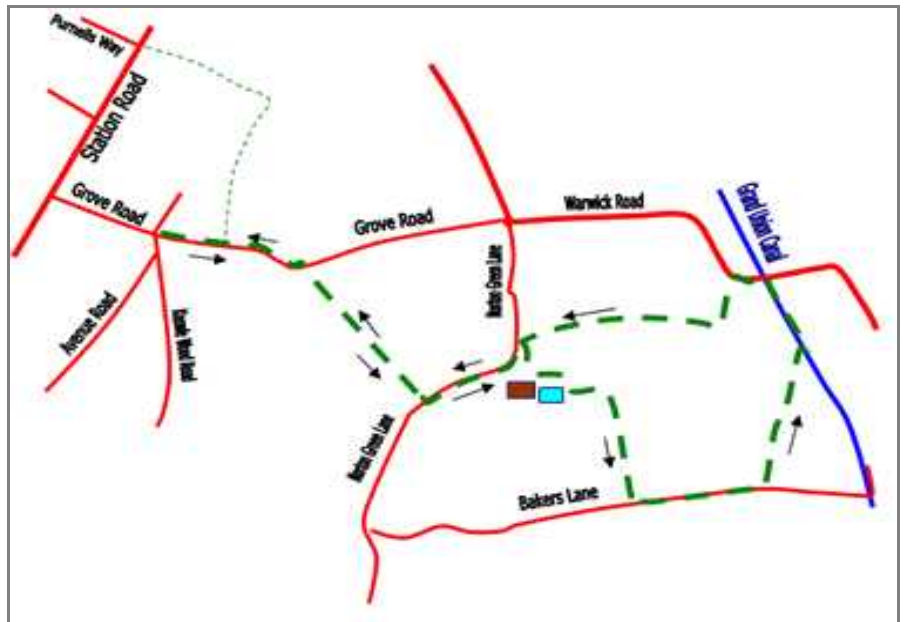
# Dorridge & District Residents Association

## A Walk from Grove Road to the Black Boy

This walk of around 3 miles takes around an hour and a half. It starts from Grove Road; there is nowhere suitable to leave a car, so either walk from home or leave your car on Middlefield Road nearby. This walk goes across fields to Norton Green Lane, around the "water treatment plant", down to Browns Lane, then back along the canal past two pubs, the Black Boy and the Heron's Nest. It then comes back up to Dorridge over fields.

The walk has a number of styles and is muddy when wet. A lot of it is in Warwickshire - this is the closest point to Dorridge that Warwickshire gets.

The pictures are from an unusually sunny evening in May 2006.



### 1: Head down Grove Road towards Warwick Road from the Knowle Wood Road roundabout.



If you are coming from Knowle, then you can start from the bridle path opposite Purnells Way on Station Road and follow the path to the right at the end of the field. This comes out on Grove Road (see map). Stay on the left, continuing on until the pavement runs out.

### 2: As the road bends left, stay on the verge.



Traffic comes quite quickly down this narrow road, so stay on the grass verge until you are opposite the footpath sign. The path is hidden behind a large conifer.

### 3: Cross the road, head up the path

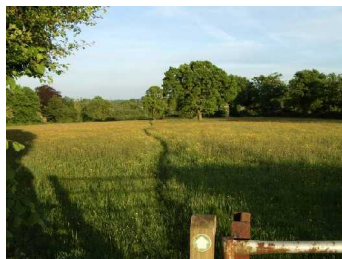


The path runs between two houses with high fencing on either side. Follow the path to the style at the end.

### 4: Climb the style and carry straight on.



### 5: Climb another the style and carry straight on.



Follow the path to the left of the oak tree and you arrive at Norton Green Road. Although the house on your right is not the most outstanding architecture in the locality, take a look on Google Earth and you will find a view of an impressive garden arrangement.

### 6: Cross the style and turn left



Turn left along Norton Green Road. Cross over to face oncoming traffic - the road is narrow and visibility is poor. Follow the road past Norton Green Farm (site of discovery of bronze age tools). Note the very old cottage with a droopy roof somewhat reminiscent of the opening titles of Bill and Ben!

**7: Past the modern bungalow, turn right along the footpath**



Just past the farm there is a newer bungalow, and the signposted footpath runs along the track beside it with very tall conifers. Continue forwards till the fence.

**8: After a few yards, climb the fence and turn right**



There are two footpaths over the fence which we cross by the style, we will turn sharp right and follow the fence.

**9: Follow the path between the fences**



The fence follows the end of some very nice gardens at the rear of the farm houses.

**10: Keep to the right and find the style**



Keeping to the black wooden fence on your right, find the style in the corner (there was an open gate when I went past so it was a little hidden but it is in the right under the weeping willow).

**11: Turn left over the style**



Over the style turn sharp left then at the end of the fence, on your right, bear right to the gate at the end of the red-roofed barn.

**12: Continue on a similar line**



At the end of the barn, continue diagonally on a similar line to the next gate in the far right corner.

**13: Go through the gate and turn right**



After going through the gate, follow the edge of the field and turn left in the corner until you arrive at the metal gate. There is a new footpath gate to the left.

**14: Go through the gate...**



and turn left between the hedges. On your right are reed beds for the sewage treatment works. Follow the path until it emerges into an open area.

**15: Turn right following the way mark**



The path now turns right. Follow this keeping to the right of the wooden fence in front of you - following between two fences with the water reservoir on your right.

**16: Go through the gate**



Following the same line, go through the gate and on to the next style.



**17: Cross the style and bear right**



This style is an interesting one - you'll know why when you see it. Cross it, and bear right, following the edge of the field to the gate which you can see in the next hedge.

**18: Follow on the field edge to the next gate**



**19: Go through the gate, and straight on**



Aim just to the right of the white garage building ahead. The path goes straight down the middle of the field, with a style over an electric fence. The path then follows just alongside the new fence to the right.

**20: Past the garage to the road**



The footpath follows the fence, over a timber bridge and through a gate onto the road.

**21: Turn left down Browns Lane**



Follow the road for a few hundred yards until you come to a large white house on your right. The path is through a field gate opposite.

**22: Turn left along the track**



There is a way mark on the gate post. The footpath follows the edge of the field which starts with a rough track. When the track turns left through to the next field, go straight ahead through the gate. Continue around the edge of the field. The field narrows and the hedge goes in and out, but eventually you will come to the narrow end of the field and a hidden style.

You may spot the canal on your right before you get to the end.

**23: Cross the style and turn over the bridge.**



At the very end of the field, find the style in the hedge, and turn right over the bridge.

**24: Over the bridge, turn left**



Turn immediately back and left on yourself just over the bridge to get down to the tow-path. Follow the tow-path past the Black Boy (though you may stop for a drink - hopefully the Bay City Rollers will not be playing as you pass by!). You follow the canal a short way, past the Black Buoy moorings, to the next bridge (finished in a fetching two-tone) which is the Heron's Nest.

**25: Go up to the bridge**



...using the path on the right. Turn left and cross the bridge keeping to the left hand side. Stop for a drink if you wish!

**26: Carry on past**



Go past the car park entrance, keeping to the verge and go half way around the corner, past the shrubs. You will find a driveway.

**27: Take the green track**



Follow the way marks along the grassy track.

**28: Keep going...**



following the way marks along the grassy track.

**29: ...until the end**



As the track enters a house, follow the path to the right, keeping between the fence and hedge.

**30: Cross the field**



Climb the style and head to the far left corner of the field.

**31: Behind the tree is the style**



The style lurks quietly in the corner behind the large tree - not easy to spot.

**32: Follow the hedge**



Keep to the edge of the field with the hedge on your left.

**33: Continue to top left corner**



At this point, you may need to pick your path with care - it gets quite muddy due to the overflowing pond on your right. However, it is passable with care. You will see a style in front of you - cross over it... (2007: The trough has been removed)

**34: ...and carry on**



in the same direction, following the obvious path.

**35: Straight over the fence**



You now retrace your steps back to Dorridge. Go across the fence and out to the road, which is Norton Green Lane.

**36: Turn left along the road.**



Go left past Norton Green Farm again and follow the road past the entrance to the treatment works. Again, probably best to cross and face oncoming traffic. Look for the footpath sign on the right just before the grey-eaved house.

**37: Take the path across the fields**



Retracing our steps, follow the path straight across the field, cross the style and keeping the hedge on your right, cross another style to the path between the houses and out onto Grove Road. Cross the road and turn left, and walk back up Grove Road back towards wherever you started

If you have any problems, comments or suggestions on this walk, send them to us at [info@dorridge.org.uk](mailto:info@dorridge.org.uk). If you have any favourite local walks, let us know and we could publish those too.